

# Bulletin №1

“With map in Tarnovgrad” and “Three hills cup”

## Organizer

SCO “Trapezitca 1954”  
Bulgarian orienteering federation  
Veliko Tarnovo Municipality

## Organizing committee

Tourist Association “Trapezitca 1902”  
Competitions will be held under auspices of the major of Veliko Tarnovo Daniel Panov

Competition director	Krasimir Danailov
Event organization	Aleksandar Atanasov
Course planner	Georgi Kartalov
SportIdent	Lidia Nikolova
Event controller	Grigor Karaivanov
Start	Mariyana Atanasova
Final	Boris Borisov

## Schedule

### 23 March (Friday)

until 14:00 h - Arrival and registration  
(Final arena – **Middle distance**)  
15:00 h - First start – Middle distance THC

### 24 March (Saturday)

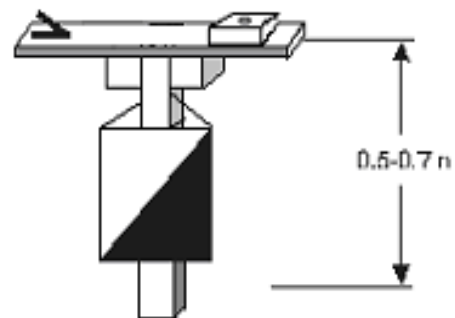
11:00 h - Second Start (Long distance – THC)  
14:00 h - Prize-giving ceremony – Three hills cup  
20:00 h - Party (Disco at Hotel Momina Krepost, Ksilifor)

### 25 March (Sunday)

10:30 h - **Start Sprint distance - „With map in Tarnovgrad”**  
13:00 h - Prize-giving and closing ceremony

## Additional information

Control points are type “prisma” on a stand with SI station and a punching device as the control number is on the SI station. If there`s a problem with the station the competitors should punch on their map.



## Start organization

Competitors should arrive 3 minutes before their start. After entering the corridor they clear their Si card. Then they CHECK their Si card. Control descriptions will be given 2 minutes before start. Maps arrangement: Women – left; Men – right. The distance between start line and start control “K” must be passed through the marked route.

## Final organization

Competitors finish through marked corridor from last control point to the finish line. On the finish they stop their time by putting their Si card in the final station. Then they walk through marked corridor to read their Si card and get their time sheet. Maps should be given to the organizers after finishing. Competitor who don`t finish should give their map to the organizers at the finish area.

The mark to the finish and start will be red-white tape.  
Complaints should be sent to organizers no more than 30 minutes after the problem appears.

According to IOF rules, doping is strongly forbidden.

The organizers strongly recommend to tighten your ankles and run with long bottoms for the long and middle distances!  
Please, throw your litter only in the marked places! Lets keep our nature clean!

For OPEN classes there will be no prizes and therefore no prizegiving ceremony.

### Technical information

**GPS: 43° 4'59.24"N 25°40'28.89"S**

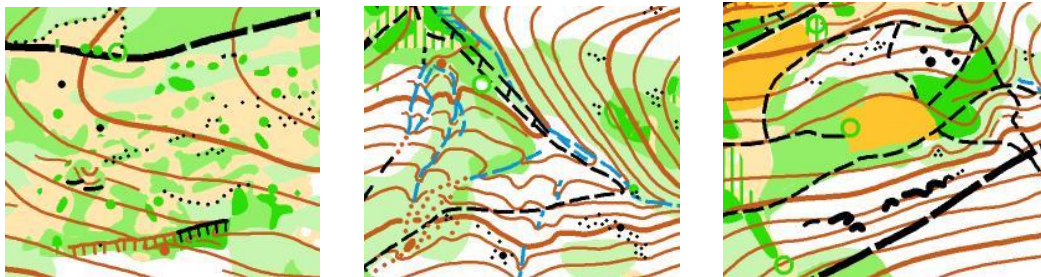
### Middle distance – 23 March 2018 (Friday)

Map	<b>Ksilfor:</b> 1:10000, contours - 5 м; according IOF. Maps will be put in plastic bags. Control descriptions will be printed on the front side of the map, there will be additional at the start. Map size A4
Terrain	Moderately to severely truncate terrain with many ground objects and different types of rocks.
Road network	There are different categories of roads and paths, some of them are hard to be spotted on the terrain, because of low usage.
Hydrography	There aren't many water objects on the terrain. At some of the valleys there is water.
Vegetation	Deciduous and coniferous forest with all kinds of runnability – varying from fast and easy to hard and slow to pass. 20% are open fields.
Start Interval	1 minute

### Other information

**M/W10 start without startlist at the final arena.** There is water, toilets and buffet in the area.

### Middle distance:



### Course information – Middle distance 23.03.18

Class	Length	CP	Climb	Climb	Length	CP	Climb
<b>M10</b>	<b>1000 м</b>	<b>5</b>	<b>50 м</b>	<b>W10</b>	<b>1000 м</b>	<b>5</b>	<b>50 м</b>
<b>M12</b>	<b>1760 м</b>	<b>9</b>	<b>110 м</b>	<b>W12</b>	<b>1600 м</b>	<b>8</b>	<b>90 м</b>
<b>M14</b>	<b>2410 м</b>	<b>10</b>	<b>115 м</b>	<b>W14</b>	<b>1840 м</b>	<b>9</b>	<b>110 м</b>
<b>M16</b>	<b>3400 м</b>	<b>14</b>	<b>215 м</b>	<b>W16</b>	<b>3100 м</b>	<b>14</b>	<b>180 м</b>
<b>M18</b>	<b>3600 м</b>	<b>16</b>	<b>220 м</b>	<b>W18</b>	<b>3370 м</b>	<b>13</b>	<b>210 м</b>
<b>M20</b>	<b>3600 м</b>	<b>16</b>	<b>220 м</b>	<b>W20</b>	<b>3370 м</b>	<b>13</b>	<b>210 м</b>

M21E	4300 M	18	245 M	W21E	3600 M	16	220 M
M21A	3100 M	14	180 M	W21A	2410 M	10	115 M
M35	3600 M	16	220 M	W35	3370 M	13	210 M
M40	3400 M	14	215M	W40	3000 M	15	135M
M45	3400 M	14	215M	W45	3000 M	15	135M
M50	3000 M	15	135M	W50	2350 M	13	100 M
M55	3000 M	15	135M	W55	2350 M	13	100 M
M60	2350 M	13	100 M	W60	2050 M	12	90 M
M65+	2350 M	13	100 M	W65+	2050 M	12	90 M
Open 1 – short and easy	1760 M	9	110 M	Open 2 – short and hard	2500 M	15	100 M

### Distances

Event center – Final – 0 км

Final – Start - **50 M** – marked route from parking and the final arena

Last CP – Final : **50 M**.

### Technical information

**GPS: N43°04'01,72" E25°33'28,54"**

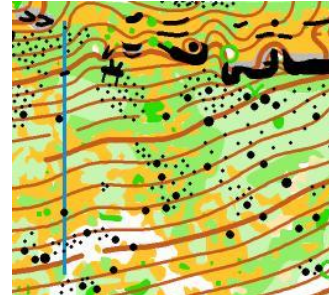
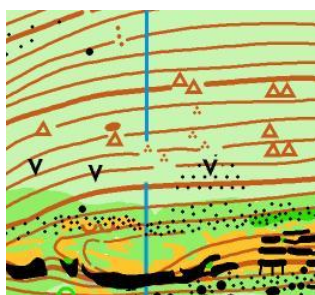
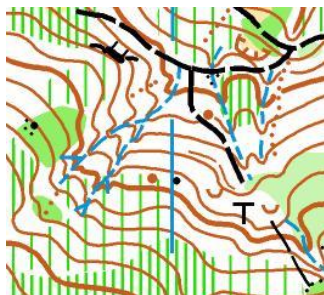
#### Long distance – 24 March 2018 (Saturday)

Map	<b>Shemshevo</b> , Scale: 1:10000, Contours - 5 M; According to IOF standards. Maps will be put in transparent plastic bags. Control descriptions will be printed on the front side of the map, there will be additional at the start. Map size is A4.
Terrain	Moderately to severely truncate terrain with many ground objects, microforms and different types of rocks.
Road network	There are different categories of roads and paths, some of them are hard to be spotted on the terrain, because of low usage. Others are very muddy because of trucks.
Hydrography	There aren't many water objects on the terrain. At some of the valleys there is water.
Vegetation	Deciduous forest with all kinds of runnability – varying from fast and easy to hard and slow to pass.
Start Interval	2 minutes

### Additional information

**M/W10 start without startlist from the final arena.** There is NO water near the final arena. **There will be GPS Tracking (M/W21E) and live results.**

#### Long distance:



## Course information – Long distance 24.03.18

Class	Length / routechoice	CP	Climb	Class	Length / routechoice	CP	Climb
M10	1000 M	4	20 M	W10	1000	4	20 M
M12	2700 M	10	110 M	W12	2500 M	9	100 M
M14	3800 M	13	180 M	W14	3500 M	12	115 M
M16	5200M	14	275 M	W16	4600 M	14	185M
M18	6650 M	17	380 M	W18	4800 M	14	260 M
M 20	6650 M	17	380 M	W20	4800 M	14	260 M
M21E	8000 M	21	420 M	W21E	5750 M	17	285 M
M21A	4350 M	11	230 M	W21A	3800 M	13	180 M
M35	5600 M	15	285 M	W35	4600 M	14	185 M
M40	5200 M	14	275 M	W40	4350 M	11	230 M
M45	4600 M	14	185 M	W45	4350 M	11	230 M
M50	4100 M	14	165 M	W50	3800 M	13	140 M
M55	4100 M	14	165 M	W55	3800 M	13	140 M
M60	3800 M	13	140 M	W60	3370 M	14	135 M
M65+	3800 M	13	140 M	W65+	3370 M	14	135 M
Open 1 - Short and easy	2700 M	10	110 M	Open 2 – Short and difficult	3370 M	14	135 M

### Distances

Event center – Final – 12 км  
 Final – Start – 1100 M – marked route from final - 20 min.  
 Last CP – Final : 70 M.

### Technical information

**GPS: N 43°04'54,10" E 25°38'18,04"**

### Sprint distance – 25 March 2018 (Sunday)

Map **Varusha - south**, Scale 1:4000, contours 2,5 M, According to IOF standards, February-March 2018. Control descriptions will be printed on the front side of the map, there will be additional at the start. Map size is A4.

Terrain Moderately to severely truncate terrain, old urban part and parks  
 Road network Well-developed network, alleys, roads – most of them paved and stairs varying in all categories.  
 Hydrography There aren't many water objects.  
 Vegetation Park and urban vegetation  
 Start interval 1 minute

### Additional information

**M/W10 will start without startlist from the final area.** There is water and toilets at the final arena.

## Sprint:



### Course information – Sprint 25.03.18

Class	Length straight / routechoice	CP	Climb	Class	Length straight / routechoice	CP	Climb
M10	700 m	4	10 m	W10	300/700 m	4	10 m
M12	1550/1700 m	11	45 m	W12	1480/1550 m	14	40 m
M14	1820/2200 m	15	75 m	W14	1640/2150 m	16	70 m
M16	2300/3600 m	20	175 m	W16	1990/3400 m	17	135 m
M18	2540/4250 m	20	175 m	W18	1990/3400 m	17	135 m
M20	2540/4250 m	20	175 m	W20	1990/3400 m	17	135 m
M21E	2540/4250 m	22	185 m	W21E	1990/3400 m	17	135 m
M21A	1820/2200 m	15	75 m	W21A	1640/2150 m	16	70 m
M35	2060/3300 m	17	125 m	W35	1800/2400 m	18	100 m
M40	2060/3300 m	17	125 m	W40	1800/2400 m	18	100 m
M45	2060/3300 m	17	125 m	W45	1800/2400 m	18	100 m
M50	1800/2400 m	18	100 m	W50	1760/2300 m	16	85 m
M55	1800/2400 m	18	100 m	W55	1760/2300 m	16	85 m
M60	1760/2300 m	16	85 m	W60	1630/2150 m	13	75 m
M65+	1760/2300 m	16	85 m	W65+	1630/2150 m	13	75 m
Open 1 – short and easy	1550/1700 m	11	45 m	Open 2 – short and hard	1820/2200 m	15	75 m

**Note:** The course lengths are measured by the officials routechoice.  
Winner times: 15-20 min.

#### Distances

Event center – Final – 7 km

Final – Start – 500 m – Marked route from the final

**You have to follow strictly the marks**

Last CP – Final : 50 m.



## Scheme



Soon we will upload Bulletin 2 with more detailed schemes for the start and final of each distance.

### General information

For more information or questions:  
Email: [skotrapezitca1954@abv.bg](mailto:skotrapezitca1954@abv.bg)  
Website: [СКО "Трапезица 1954"](http://СКО )

Welcome to Veliko Tarnovo!